

C-FAR Connection

Illinois Council on Food and Agricultural Research

Governor Ryan at annual meeting *Meeting highlights include achievement award presentation and election of C-FAR leaders*

The highlight of the annual meeting of the Illinois Council on Food and Agricultural Research on February 22nd at Springfield's Hilton Hotel was Governor George H. Ryan's visit and presentation of the first C-FAR Achievement Award. Governor Ryan spoke of the importance of agricultural research for Illinois and C-FAR's vital role. The C-FAR Achievement Award was presented to the Illinois Beef Quality Initiative research team: Drs. Larry Berger, Dan Faulkner, Floyd McKeith, and Douglas Parrett from the University of Illinois at Urbana-Champaign and Paul Walker from Illinois State University. Their

Governor Ryan spoke of the importance of agricultural research for Illinois and C-FAR's vital role.

outstanding research and outreach have resulted in innovative beef production systems that will produce more high-quality beef to meet consumer demand and will lower production costs.

The C-FAR board of directors was elected during the meeting. The members are Terry Wolf, Chair (re-elected; Homer); Carol Keiser, Vice Chair and Membership Chair (re-elected; Carlinville); Constance Locher Bussard, Secretary/Treasurer (re-elected; Springfield); Jack Erisman, Research Chair (re-elected; Pana); David Downs, Research Vice Chair (Allerton); Fred Bradshaw, Legislative Chair (Griggsville); and W. Lyle Roberts, Jr., Past Chair (Bloomington). After elections, board members drew lots for term lengths: Wolf, Erisman, and Keiser drew two-year terms and Downs, Bussard, and Bradshaw drew one-year terms.

The five C-FAR working groups met for updates on the Strategic Research Initiative (SRI) external reviews and to elect working group chairs and vice chairs. These working group leaders were elected:



Governor George Ryan expresses his support for C-FAR and agricultural research in Illinois at the C-FAR 2000 Annual Meeting while C-FAR Board Chairman Terry Wolf looks on.

Working Group 1: Expanding Agricultural Markets

Nels Kasey (Paris), Chair
Roger Hubele (Enfield), Vice Chair

Working Group 2: Rural Economic Development

A.J. Harland (Lafayette), Chair
Kevin Brussell (Casey), Vice Chair

Working Group 3: Agricultural Production Systems

Steve Kasten (Centralia), Chair
Brent Bidner (Monticello), Vice Chair

Working Group 4: Human Nutrition and Food Safety

Carol Meyer (Steeleville), Chair
Theresa Stretch (Ashmore), Vice Chair

Working Group 5: Natural Resources

Susan Adams (Atlanta), Chair
Angela Kazakevicius (Pomona), Vice Chair

Joe Hampton, director of the Illinois Department of Agriculture, encouraged members to stay in contact with and provide input to their legislators to

(continued on page 3)

IN this ISSUE



Annual meeting.....	1
C-FAR Achievement Award	4
SRI reviews	6
Research committee	8
Meet your C-FAR leaders	10

C-FAR Connection

Published by the Illinois Council on Food and Agricultural Research (C-FAR)

Board of Directors & Staff

Chair: Terry Wolf, Homer
Vice Chair & Membership Chair:
Carol Keiser, Carlinville
Secretary-Treasurer: Constance
Locher Bussard, R.D., Springfield
Legislative Chair: Fred Bradshaw,
Griggsville
Research Chair: Jack Erisman, Pana
Research Vice Chair: David Downs,
Allerton
Past Chair: W. Lyle Roberts, Jr.,
Bloomington

Executive Administrator:
Kraig A. Wagenecht
Communications Director:
LeAnn M. Ormsby

Working Group Leadership

EXPANDING AGRICULTURAL MARKETS:

Chair – Nels Kasey
Vice Chair – Roger Hubele

RURAL ECONOMIC DEVELOPMENT:

Chair – A.J. Harland
Vice Chair – Kevin Brussell

AGRICULTURAL PRODUCTION SYSTEMS:

Chair – Steve Kasten
Vice Chair – Brent Bidner

HUMAN NUTRITION AND FOOD SAFETY:

Chair – Carol Meyer

NATURAL RESOURCES:

Chair – Susan Adams
Vice Chair – Angela Kazakevicius

C-FAR

1101 W. Peabody Drive
Urbana, IL 61801
Phone: (217) 244-4232
(800) 232-7991
Fax: (217) 244-8594
E-mail: cfar@aces.uiuc.edu
URL: <http://www.ag.uiuc.edu/~c-far>

Newsletter Coordinator: LeAnn Ormsby, C-FAR
Communications Director: **Editor:** Molly Bentsen, Information Technology and Communication Services (ITCS), College of Agricultural, Consumer and Environmental Sciences, University of Illinois; **Designers:** Kathleen Chmielewski and Krista Sunderland, ITCS, College of Agricultural, Consumer and Environmental Sciences, University of Illinois; **Photographers:** Ron Ackerman, Daniels/Ackerman Photography; David Riecks, ITCS, College of Agricultural, Consumer and Environmental Sciences, University of Illinois

GREETINGS



KRAIG A. WAGENECHT,
EXECUTIVE ADMINISTRATOR

C-FAR poised on strong foundation *The opportunities ahead*

As we entered the new millennium earlier this year, the interest and participation in C-FAR activities was at an all-time high. With a full meeting and events schedule, C-FAR members made significant commitments to advance the effectiveness of our coalition. One noticeable trait has become evident — a new degree of organizational and membership “maturity.” It was not that many years ago that C-FAR was simply an idea. Today, after considerable breaking of new ground and tremendous support from the State of Illinois, the food and

agriculture industry, and university researchers and leaders, C-FAR is in a strong position to build upon the foundation which has been solidly laid.

Our challenges, however, will remain great. The C-FAR members, through the working groups, have a strong commitment to ensuring that the research conducted will have a high likelihood of benefiting our industry and consumers in general. As the groups continue shaping this direction, awareness of the entire research portfolio will be more important than ever. It won't be adequate to simply focus on the Strategic Research Initiatives, the external research program, or how the universities are investing their program funds. The interrelationships, the complementary nature of various efforts, and building upon collaborations will all need to be considered.

While these opportunities can be complex at times, we will continue to look to our membership for guidance. A perfect example is the newly formed Research Committee. This group of C-FAR members, coupled with university representation, will be providing the framework for our continued success in regard to research-related initiatives. Today C-FAR, through the hundreds of volunteers who commit their time and talents, will embrace new opportunities that our maturity now provides. We look forward to joining with all of our members and constituents in doing just that.

“Awareness of
the entire
research portfolio
will be more
important
than ever.”



New communications director in place



LEANN M. ORMSBY,
COMMUNICATIONS
DIRECTOR

C-FAR welcomes its new communications director, LeAnn Ormsby. LeAnn joined the C-FAR staff on January 31st, at a time when activities were in full speed, including the poster session and annual meeting. Hopefully many of you have already had the chance to meet her. LeAnn comes to us with a rich and diverse background, including a bachelor's degree in microbiology from Purdue University and an MBA from the University of Illinois. She has worked as a research scientist and spent many years as the owner/manager of a horse breeding and training farm.

Among many other important communications functions, LeAnn will coordinate the *C-FAR Connection* newsletter, media contacts, annual reports, and the C-FAR website. Please feel free to contact LeAnn at (217) 244-4232 or lormsby@uiuc.edu for any C-FAR information needs you may have.

Breaking news

The Illinois General Assembly and Governor George Ryan approved a \$15 million appropriation for the Illinois Council on Food and Agricultural Research (C-FAR) for FY01 as part of the Food and Agriculture Research Act. "We are very pleased with the \$15 million appropriation. C-FAR has had strong support from Governor Ryan and the state legislature, and this will allow us to continue our investment in research critical to the success of food and agriculture in Illinois," said Terry Wolf, chairman of the C-FAR board, from Homer.

Governor Ryan at annual meeting

(continued from page 1)

secure and strengthen Illinois' agricultural future. He also thanked the many C-FAR volunteers for their commitment and the hours of time spent directing how the C-FAR investment is made. Joan Messina, assistant director of the Illinois Department of Agriculture, expressed her admiration for the accomplishments of C-FAR. "I appreciate your efforts tremendously. [C-FAR] is so worthwhile, so well aimed, and so successful," Messina said.

Jack Erisman, C-FAR board member and research chair, outlined the new research committee. The committee will evaluate current and proposed research projects, seek input on research needs from research professionals and the food and agricultural community, identify research beneficiaries, and engage public participation in planning and evaluating the process and impact of research activities.

A biotechnology and value-added research plan recommendation was presented to the membership pending an increase in the C-FAR appropriation. An ad-hoc committee comprised of C-FAR members and university researchers developed the plan. The biotechnology initiative includes developing an information clearinghouse to focus on key issues of direct concern to the Illinois food and agricultural sectors, including the assessment of impacts of agricultural biotechnology in Illinois. The value-added initiative would seek opportunities to expand markets, facilitate sustainable resource use and economic vitality, and identify alternative and value-added agricultural enterprises.

First Achievement Award winners named

C-FAR established its Achievement Award to honor researchers for outstanding and innovative team research and outreach

The Achievement Award is given to research teams that address priorities of the Illinois agriculture and food sector and communicate their findings in such a way that both producers and consumers benefit. Governor George Ryan presented the first Achievement Award on February 22nd at the C-FAR annual meeting to the members of the Illinois Beef Quality Initiative research team.

“The Illinois Beef Quality Initiative has focused on ways that producers can enhance carcass quality and yield grade. This is extremely beneficial to the state’s beef producers.”

— Larry Corah, Assistant Executive Director, Supply Development Branch, Certified Angus Beef Program



GOVERNOR GEORGE RYAN PRESENTED THE 2000 C-FAR ACHIEVEMENT AWARD TO THE ILLINOIS BEEF QUALITY INITIATIVE RESEARCH TEAM (FROM LEFT: ILLINOIS DEPARTMENT OF AGRICULTURE DIRECTOR JOE HAMPTON, DAN FAULKNER, LARRY BERGER, PAUL WALKER, GOVERNOR GEORGE RYAN, FLOYD MCKEITH, DOUGLAS PARRETT, C-FAR BOARD CHAIRMAN TERRY WOLF)

Highlights of the Illinois Beef Quality Initiative:

- The primary focus of the Illinois Beef Quality Initiative is to aid the Illinois beef industry in producing more lean, high-quality beef to meet consumer demand.
- Beef consumers benefit through this program by the increased availability of better tasting, reasonably priced beef products.
- Revolutionary new management systems identified by this research will change the production systems of many Illinois beef producers and will also change the paradigm for the entire beef industry.
- This initiative has reached out throughout Illinois and facilitated the adoption of innovative systems to produce high-quality beef at lower cost.
- Several national feed companies have adapted the Illinois Beef Quality

Initiative program into their recommendations for producing high-quality beef, including Moorman’s, Land O’Lakes, Farmland, Consolidated Nutrition, and DeKalb Feeds.

Beef 2000

The Beef 2000 project provides industry leaders with in-depth training on market cattle evaluation, grading, and carcass fabrication to enhance the development of strategies and programs that address the quality and consistency shortfall of the beef industry. Over 250 beef industry leaders have participated in in-depth training during the past three years. Results have been shared with over 800 producers at 10 multi-county extension meetings. Producers who apply Beef 2000 principles can expect to gain premiums ranging from \$50 to \$150 per animal.

“The research of this team that demonstrates early weaning management systems’ positive effect on carcass quality is beef pioneering.”

— Dan Loy, Professor of Animal Science, Extension Beef Specialist, Iowa State University

Early-Weaning Management System

Various weaning management systems currently used by Illinois beef producers were evaluated, and an Early-Weaning Management System has been proposed to specifically target a high-quality beef market. Early weaning systems have a dramatic and positive effect on

- improving carcass quality grade,
- feed efficiency and average daily gain of the growing and finishing steer,
- economics of the total beef system, and
- reproductive efficiency of the cow after the first year of implementation.

Integrated Resource Management/Standardized Performance Analysis

Integrated Resource Management is a team management concept that recognizes effective production practices, diagnoses inefficiencies in production, and prescribes corrective action that will ensure maximum profitability and competitiveness through the optimum utilization of all farm or ranch resources.

Standardized Performance Analysis (SPA) was developed to provide cow and calf producers with the economic information necessary to make educated business decisions. The

program helps producers discover how to increase their efficiencies and reduce costs in order to realize maximum financial success. The SPA program is available free of charge thanks to sponsorship by University of Illinois Extension, the University of Illinois Department of Animal Sciences, C-FAR, and the Illinois Beef Association.

“This team has made an outstanding contribution to Illinois beef producers, consumers, and rural communities.”

— Steven C. Loerch, Professor of Animal Sciences, Ohio Agricultural Research and Development Center, Ohio State University

“This research on early weaning, creep feeding, and evaluating the effects on carcass quality causes one to rethink some of the traditional concepts in beef production.”

— Kelly Keaschall, Vice President, DeKalb Feeds, Inc.



Strategic Research Initiatives (SRI) External Review

National experts visit Illinois to review SRIs

In 1998, C-FAR established Strategic Research Initiatives (SRI) to implement a targeted, multi-disciplinary and multi-institutional approach to addressing major issues and concerns of the Illinois food and agriculture industry and consumers.

Five research areas were identified: Information Systems and Technology, Rural Community Development, Swine Odor and Waste Management, Food Safety, and Water Quality. A total of \$5 million was allocated to the overall SRI effort in FY99 and again in FY00.

With almost two years of ongoing research for four out of the five SRIs (Water Quality research began full implementation in September 1999), C-FAR decided it was an appropriate time to conduct an external review of their efforts. A priority was placed on garnering an outside perspective from national leaders in these four research areas. It was important to ascertain the success of this collaborative research approach and determine what changes, if any, in direction or process should be made. National experts from across the U.S. were invited to Illinois in February and March to participate in two-day reviews of the SRI in their area of expertise. A panel of three or four evaluators was assembled and asked to provide professional opinions about the effectiveness of the team approach, the quality of work being done, and the progress being made. Written reports and responses from the respective SRI teams followed this review process.



Swine Odor and Waste Management

The Swine Odor and Waste Management SRI is intended to support the continued development of an environmentally sustainable, socially acceptable, and economically viable swine industry in Illinois.

Review Date: February 3 and 4

Review Team:

Chair: Gary Allee – Professor, Animal Sciences Unit, University of Missouri–Columbia

Team members:

Albert Heber – Associate Professor and Extension Agricultural Engineer, Agricultural and Biological Engineering, Purdue University

Susan Schiffman – Professor of Medical Psychology, Department of Psychology and Behavioral Sciences, Duke University

SRI research leader: Michael Ellis – University of Illinois at Urbana-Champaign

For more information on the Swine Odor and Waste Management SRI, you can visit <http://sowm.outreach.uiuc.edu/> on the World Wide Web.

Food Safety

The mission of the Food Safety SRI is to promote multidisciplinary research that leads to safe and healthful foods.

Review Date: February 8 and 9

Review Team:

Chair: Tanya Roberts – Senior Economist, Economic Research Service, U.S. Department of Agriculture

Team members:

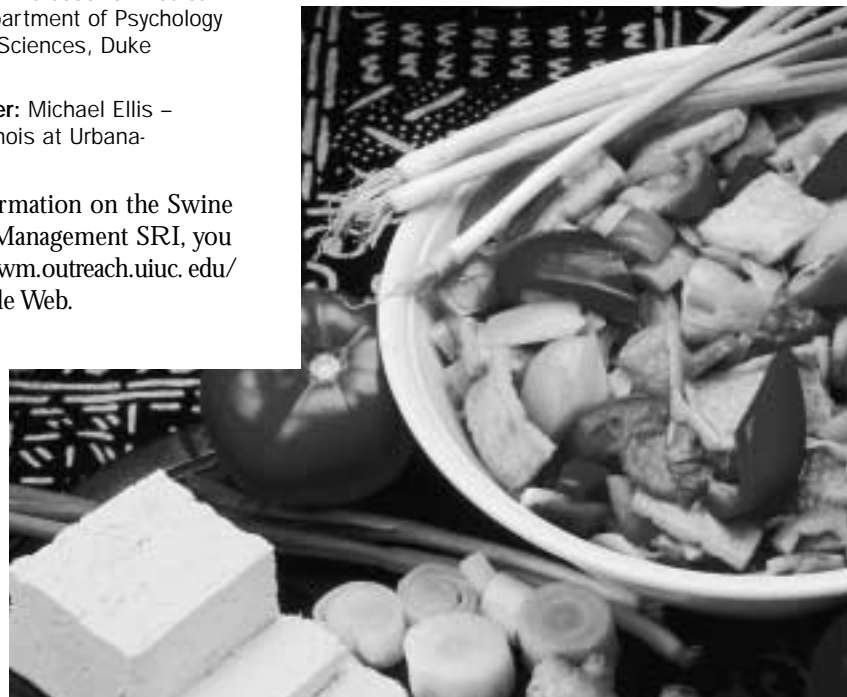
William LaGrange – Extension Food Scientist, Iowa State University

Margaret (Peg) Coleman – Epidemiology and Risk Assessment Division, Office of Public Health and Science, Food Safety and Inspection Service, U.S. Department of Agriculture

Jean Kinsey – Professor, Applied Economics, Director of The Retail Food Industry Center, University of Minnesota

SRI research leader: Jeanette (Jan) Endres – Southern Illinois University at Carbondale

For more information on the Food Safety SRI, you can visit <http://www.ag.uiuc.edu/sri/foods.html> on the World Wide Web.





Information Systems and Technology

The Information Systems and Technology SRI is designed to enhance the availability, integration, delivery, and use of information throughout global food and agricultural systems, with special focus on Illinois.

Review Date: February 17 and 18

Review Team:

Chair: David King – Executive Director, Indiana Higher Education Telecommunication System

Team members:

Robert King – E. Fred Koller Professor of Agricultural Management Information Systems, Department of Applied Economics, University of Minnesota

Thomas Tate – National Program Leader, Information Technology, Cooperative State Research Education and Extension Service, U.S. Department of Agriculture

Craig Wood – Coordinator of Distance Learning, College of Agriculture, University of Kentucky

SRI research leader: Sarahelen (Sally) Thompson – University of Illinois at Urbana-Champaign

For more information on the Information Systems and Technology SRI, you can visit <http://www.ag.uiuc.edu/sri/info.html> on the World Wide Web.



Rural Community Development

The Rural Community Development SRI focuses on alternative and value-added agricultural development.

Review Date: March 7 and 8

Review Team:

Chair: Sam Cordes – Director, Center for Rural Revitalization, University of Nebraska-Lincoln

Team members:

Janet Ayres – Professor of Agricultural Economics, Purdue University

Thomas Johnson – Professor of Agricultural Economics, University of Missouri-Columbia

Robert Lovan – Special Assistant to the Administrator, RBS/Rural Development, USDA

SRI research leader: Ray Lenzi – Southern Illinois University at Carbondale

For more information on the Rural Community Development SRI, you can visit <http://www.siu.edu/~i-farm> on the World Wide Web.

Water Quality

The Water Quality SRI focuses on ensuring a sustainable, clean, safe water supply by evaluating the impact of agricultural systems in Illinois. Research efforts concentrate on three general areas — mass balance, modeling, and best management practices.

The Water Quality SRI began full implementation in September 1999. Due to the limited period for progress, this SRI was not scheduled for an external review. There are three Water Quality focus areas and four team leaders:

■ **Modeling:** Jim Westervelt – University of Illinois at Urbana-Champaign

■ **Best Management Practices:** Robert Hoefft – University of Illinois at Urbana-Champaign; George Czapar – University of Illinois Extension

■ **Mass Balance:** Mark David – University of Illinois at Urbana-Champaign

For more information on the Water Quality SRI, you can visit <http://web.aces.uiuc.edu/sriwq> on the World Wide Web.



Summary reports of the SRI external reviews will be available after all of the final reports have been received and reviewed.

C-FAR Research Committee

Committee formed to help guide research directions



JACK ERISMAN, RESEARCH CHAIR

The C-FAR membership, through the working group process, plays a key role in deciding the direction of C-FAR-funded research. Due to the complexities involved with this responsibility and in order to maintain effective processes, it was determined that a research committee should be

formed. Research chair Jack Erisman stresses that “we need to identify issues, challenges, and opportunities that require our collective guidance so that working group and research leaders can effectively carry out their responsibilities.”

Even though the C-FAR by-laws provide for a Research Committee, no such committee has actually functioned for the past three years. In its place, ad-hoc committees were formed to address various research-related initiatives. These ad-hoc committees have served an important role and have moved C-FAR’s research activities forward, but with the ever-increasing complexity of the C-FAR research portfolio, activating a Research Committee has become necessary. This committee is charged, per the by-laws, with the following tasks:

- Inquire into and prepare reports on current and planned research in Illinois on food and agriculture.
- Seek recommendations on research needs from: a) research professionals at the Illinois universities currently conducting such research or elsewhere, b) interested persons and groups, and c) the public.
- Identify research beneficiaries.
- Prepare recommendations on research needs, processes, and impacts, and pursue their implementation as authorized.
- Develop ways to engage public participation in planning and evaluating the process and impact of research activities, so as to foster public confidence in ongoing food and agricultural research.



The following individuals comprise the Research Committee:

Chair:

Jack Erisman
C-FAR Research Chair

Vice Chair:

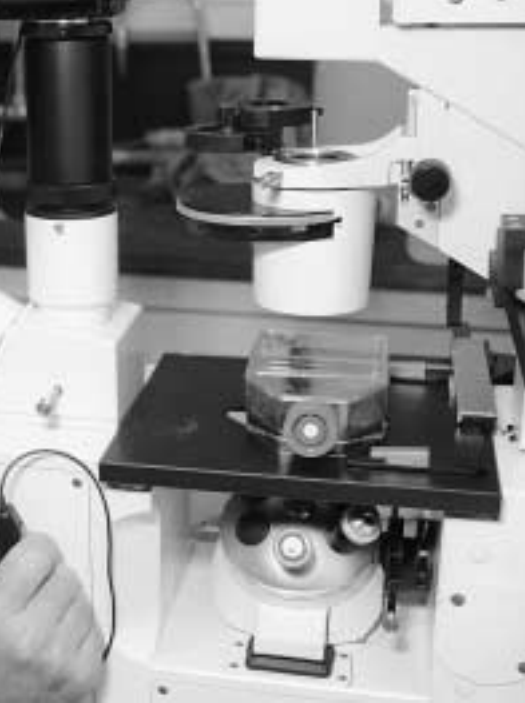
David Downs
C-FAR Research Vice Chair

Members:

Chairs of each of the five working groups:

Nels Kasey (Illinois Crop Improvement Association)
A.J. Harland (Illinois Beef Association)
Steve Kasten (Illinois Forage and Grassland Council)
Carol Meyer (Illinois Soybean Association)
Susan Adams (Illinois Corn Growers Association)





Two members at-large from each of the five working groups:

- Len Corzine (Illinois Corn Growers Association)
- Paul Gebhart (Illinois Sustainable Agriculture Society)
- Kevin Brussell (Illinois Sustainable Agriculture Society)
- Frank Thorp (Individual Member)
- Molly Ann Godar (Illinois Pork Producers Association)
- Pam Hansen (Illinois Stewardship Alliance)
- Steve Calhoun (Illinois Seed Trade Association)
- Jim Fraley (Illinois Milk Producers Association)
- Gerald Carlson (Individual Member)
- John Quandt (Illinois Fertilizer and Chemical Association)

Four members appointed at-large by the chairman of the board, with board of directors concurrence:

- Dan Kelly (ISU Ag Alumni Association)
- Karen Little (Illinois Dietetic Association)
- Alan Puzey (UIUC ACES Alumni Association)
- Derek Winstanley (Illinois State Water Survey)

Ex-Officio Members:

- Associate Dean for Research — UIUC ACES (Dr. Steve Pueppke)
- Assistant Dean for Research, C-FAR Leadership — UIUC ACES (Dr. George Fahey)
- Associate Dean for Research — SIUC (Dr. Anthony Young)
- Chair, Department of Agriculture — ISU (Dr. J. Randy Winter)
- Chair, Department of Agriculture — WIU (Dr. Danny Terry)
- Executive Administrator — C-FAR (Kraig Wagenecht)

The Research Committee will meet as the need arises to address various research issues. This includes providing guidance in how working groups can be most effective in the review of external proposals and research progress in general. "I believe we have an excellent opportunity through the Research Committee to further advance C-FAR and determine how it can continue to make a difference," stated Erisman.



External competitive grants program

The C-FAR working groups met from March 9th through March 15th to prioritize proposals that will be funded as part of the External Competitive Grants Program. This followed an extensive "at-home" review of proposals by the working group members. For FY01, 123 proposals were received, requesting a total of \$13,019,007. This year, \$2.2 to \$2.6 million will be available to fund projects depending on the total C-FAR appropriation. For a list of funded projects, please contact the C-FAR office at (217) 244-4232 or (800) 232-7991. A list of these proposals will also be provided on the C-FAR website at www.ag.uiuc.edu/~c-far.

Meet your C-FAR leaders

2000 Board of Directors



TERRY WOLF

Position: Chair
Representing: Illinois Corn Marketing Board
Hometown: Homer
Family: Wife, Jan; sons Brad, Jeremy, Trent; daughter, Kimberly

Background that benefits C-FAR

I graduated from the U of I in agricultural economics and worked in the retail and wholesale grocery business for Eisner Foods, a division of Jewel Foods, as a store manager in Springfield and Indianapolis, then worked in Champaign as a produce buyer/merchandiser. I began farming in 1977, the same year Jan and I were married. My father retired five years ago and my son Jeremy began working with us in 1999. I represent the Illinois Corn Marketing Board on the U.S. Grains Council executive board and also serve on the Corn Congress for the National Corn Growers Association. I served as chairman of the ICMB in 1997-1998 and have served as chair of the C-FAR board since November 1996.

Why is C-FAR important to you?

C-FAR has evolved tremendously since the early days of 1995. There is nothing like C-FAR anywhere else, so each time we tackle something new we are breaking new ground. I have found the impact C-FAR is having on the universities and research community to be one of the most rewarding outcomes of this experience, and the best is yet to come.



CAROL KEISER

Position: Vice Chair & Membership Chair
Representing: Illinois Beef Association
Hometown: Carlinville
Family: Sons Christopher and Ryan; daughter, Angeline; granddaughters Kellee and Shalyn

Background that benefits C-FAR

My degree in animal science, 30 years' experience in production agriculture, several years teaching vocational agriculture, and involvement in rural community economic development gives me a broad-based perspective on real-life impacts from food and agricultural research. Recently I completed an appointment on the USDA Strategic Planning Task Force on Research Facilities. This experience opened my eyes to diverse geographical differences in the way one interprets food and agricultural priorities and in what and how the federal government should fund and not fund.

Why is C-FAR important to you?

I have been involved since the first meetings of the C-FAR Organizing Committee. The original concept of a "statewide coalition of traditional, sustainable, consumer, and environmental groups working together to ask for state support" is still true today. It is my pleasure to be part of an effort that works and has meaningful results. I feel Illinois should rank in the top ten states in support for food and agricultural research. We need to expand our research capacity and to enhance the critical mass to build our foundation for the future of problem solving. C-FAR encourages and expects results for the public dollars invested. I am interested in measurable outcomes that impact my business and others throughout the state. C-FAR has made a difference in the way research traditionally conducts business through collaboration and coordination of efforts, plus accountability.



CONSTANCE LOCHER BUSSARD, R.D.

Position: Secretary/Treasurer
Representing: Illinois Dietetic Association
Hometown: Springfield

Family: Husband, Larry; son, Tony; daughters Marie and Martha

Background that benefits C-FAR

I bring a varied background representing the consumer of Illinois agricultural products. As a dietitian and representing that group we are the link to food nutrition and health and a strong link at the fork end of the farm-to-fork chain. We translate nutrition research into healthy real-food choices that people can make; we translate food safety research into easy practical actions people can follow to ensure that the food they buy and cook is safe and wholesome; and we work with people to effect and maintain those lifestyle changes that will keep them healthy and productive citizens.

Why is C-FAR important to you?

The Illinois Dietetic Association is committed to the optimal health and nutrition status of the citizens of Illinois. I can think of no more important area in which to apply that commitment than the Illinois Council on Food and Agricultural Research. Through working with C-FAR, as a representative of my organization, I have been able to channel my energy with that of many others to achieve real, meaningful changes that benefit the citizens of Illinois.



FRED BRADSHAW
Position: Legislative Chair
Representing: Illinois Soybean Association
Hometown: Griggsville
Family: Wife, Carole; sons Jeff (wife,

Junette), Eric, Matt (wife, Lori; son, Wesley)

Background that benefits C-FAR

I was chairman of the Resource, Conservation and Development Committee formed to establish an Agricultural Research Center in Western Illinois — the U of I Orr Research Center at Perry. I have worked with this organization for 25 years and have seen how adequate funding can bring a dream to reality. This center not only houses the U of I program, but also is the site for the John Wood Community College Agriculture Program, a unique partnership between a land-grant university and a community college. I also worked with Don Holt in developing the basic idea for reliable state funding for research. This idea eventually was approved as C-FAR.

Why is C-FAR important to you?

C-FAR is one solution for adequate funding for research. Agricultural research and development is important in keeping Illinois on the cutting edge. Dependable funding for all agricultural research institutions will enable many worthy projects to be completed. We need this foundation to strengthen Illinois agricultural production and to be competitive in the world market.



DAVID DOWNS
Position: Research Vice Chair
Representing: Illinois Farm Bureau
Hometown: Allerton
Family: Wife, Janece; sons Douglas and Robert

Background that benefits C-FAR

A producer of corn and soybeans (including food grade corn), I have 15 years of service on the Champaign County Soil and Water Conservation District board. I serve as an Illinois Farm Bureau board member and am a former president of the Vermilion County Farm Bureau.

Why is C-FAR important to you?

The dynamics of agriculture demand public funding of agricultural research. C-FAR's structure permits stakeholder oversight and direction.



W. LYLE ROBERTS, JR.
Position: Past Chair
Representing: Illinois Soybean Association and Checkoff
Hometown: Hopedale
Family: Daughter, Renee; son, Bryan

Background that benefits C-FAR

I am involved in general and specific project planning for state, regional, and national soybean and agriculture research efforts.

Why is C-FAR important to you?

From the standpoint of both production and end consumer use, research offers us one of the greatest opportunities to improve our quality of life.



JACK ERISMAN
Position: Research Chair
Representing: Illinois Sustainable Agriculture Society
Hometown: Pana
Family: Wife, Jeannie; sons Tim and Ryan

Background that benefits C-FAR

I have always been involved in livestock production, and have grown a wide range of specialty crops using a variety of cultural practices. My experience also consists of more than 35 years of board experience, which has included agriculture marketing and supply, medical services, conservation and drainage districts, and sustainable agriculture organizations.

Why is C-FAR important to you?

If we envision a stable social setting with a viable and diverse food production system for the future, then we must find ways to offset the capital concentration and limiting market access that is now evolving. C-FAR offers its members forums for coalescing concepts and concerns and addressing these issues through research, analysis, and education.

calendar

2000

May 29	Memorial Day Observed — C-FAR Office Closed
June	Research Committee Meeting (date to be announced)
July 4	Independence Day — C-FAR Office Closed
July 11	Board of Directors Meeting
August 22	Semi-Annual Meeting (location to be announced)
September 4	Labor Day — C-FAR Office Closed
September 5	Board of Directors Meeting
September 26–28	Farm Progress Show — Cantrall, Illinois (C-FAR to participate)
November 7	Board of Directors Meeting
November 23–24	Thanksgiving Observance — C-FAR Office Closed
December 25–26	Christmas Holiday — C-FAR Office Closed
January 1	New Year's Day — C-FAR Office Closed



Several additional activities will be scheduled at a later time.
Please call the C-FAR office or check the calendar on the C-FAR website at
<http://www.ag.uiuc.edu/~c-far/events.html> for further details.